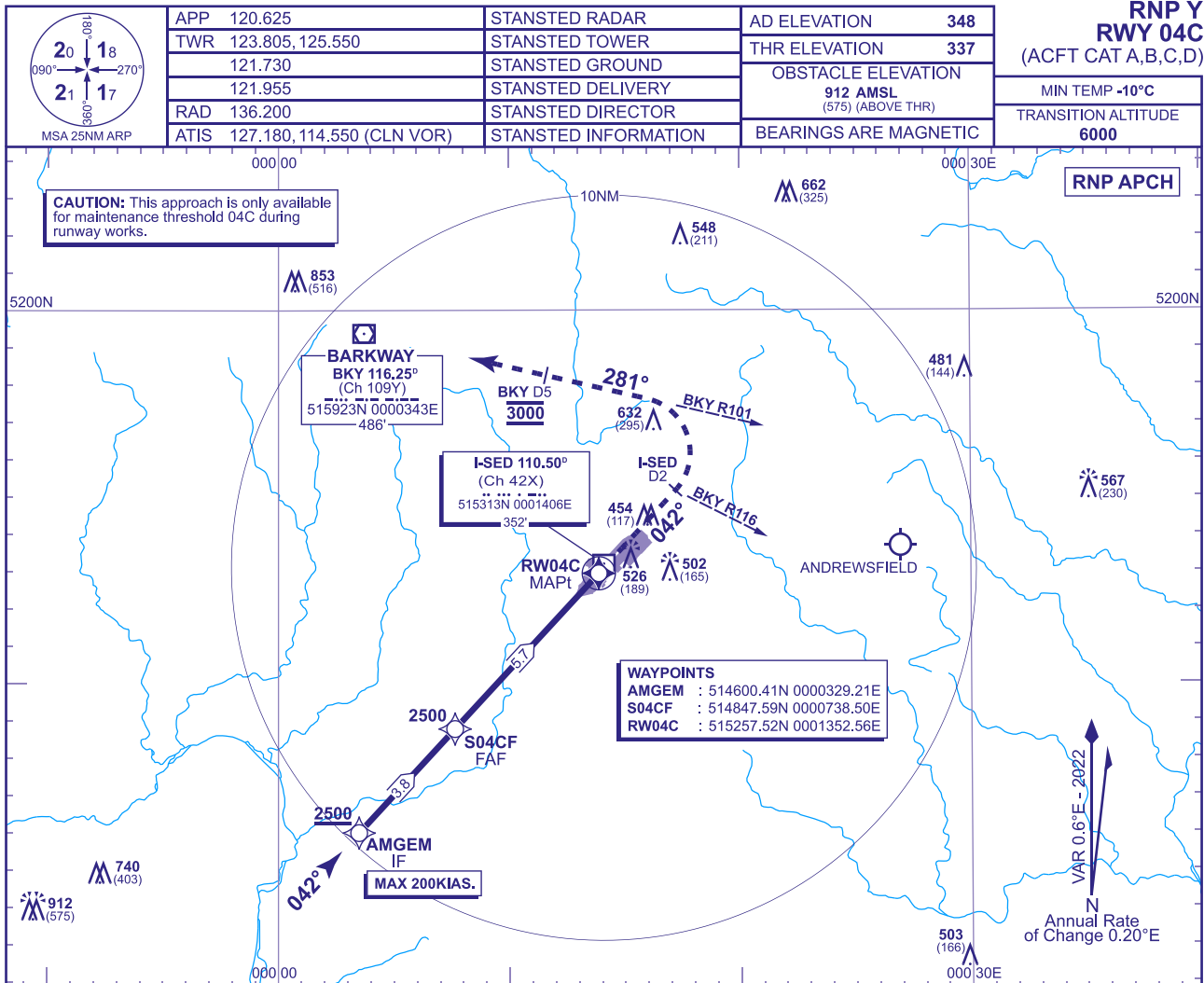


LONDON STANSTED

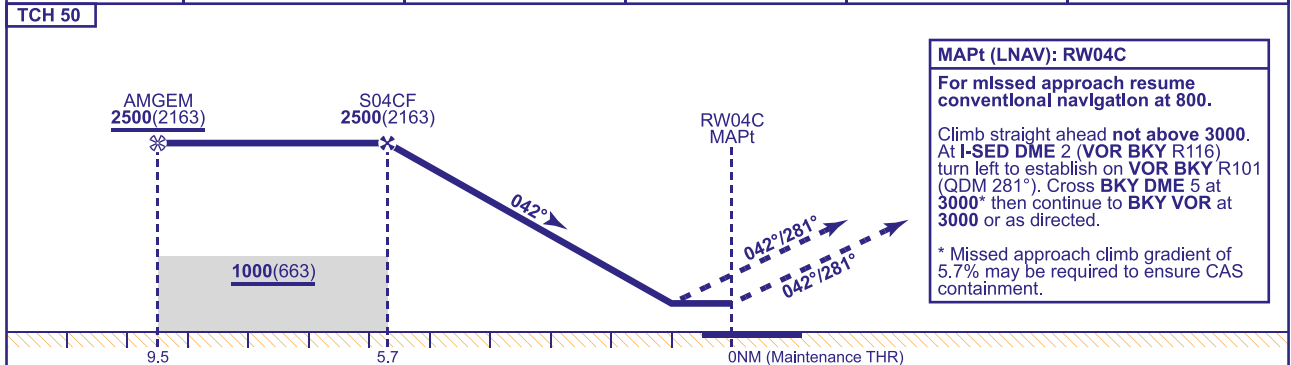
RNP Y
NY 04C

RWY 04C

(ACFT CAT A,B,C,D)



RECOMMENDED PROFILE: VERTICAL PATH ANGLE 3.5° (LNAV 6.1%) 370FT/NM					
NM to RW04C	5	4	3	2	1
ALT(HGT)	2250(1913)	1870(1533)	1500(1163)	1130(793)	760(423)



Aircraft Category		A	B	C	D	Rate of descent	G/S KT	160	140	120	100	80
OCA (OCH)	LNAV/VNAV	660(323)	660(323)	660(323)	660(323)		FT/MIN	990	870	740	620	500
	LNAV	710(373)	710(373)	710(373)	710(373)							
VM(C)OCA (OCH AAL)	Total Area	900(552)	900(552)	1030(682)	1040(692)							

AIRCRAFT UNABLE TO RECEIVE VOR DME BKY
Advise ATC. Radar direction will be passed for missed approach procedure.

NOTE	1	MAX 185KIAS for MAP until established on BKY R101.
	2	DME I-SED only to be used for missed approach.
	3	Temperature at which VPA exceeds 3.5° is 14°C.

CHANGE (2/25): PANSHANGER DISUSED AD REMOVED. AERO INFO DATE 25 NOV 24 AD 2-EGSS-8